

Kia EV5

GT Line



SUPER SEVEN STARS



Movement that inspires

Lithium-ion

88.1 kWh

Range (WLTP)

500 km

Max Speed

185 km/h

Level(3) DC Fast Charging

27 min (80%)



Touch type Buttons



Surround View Monitor (SVM)



Fingerprint Authentication System



Column type Shift by Wire



Bench type Seat



Cool_warm_storage



Ergo-Motion Seat



MFR LED Head Lamp



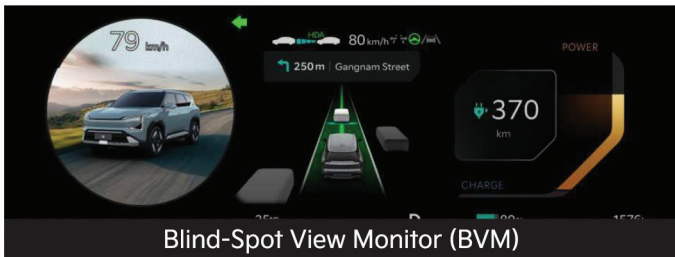
LED Rear Combi Lamp



Auto Flush Outside Door Handles



Smart Power Tailgate



Blind-Spot View Monitor (BVM)



12" Head-up Display



Vehicle-to-Load (V2L)



The front center lamp

Exterior Color



Snow White Pearl (SWP)



Starry night black (NNB)



Ivory silver (ISM)



Starry night black (NNB)

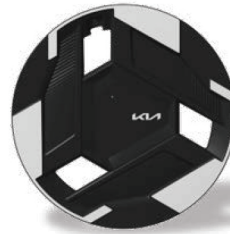
Snow white pearl (SWP)



Starry night black (NNB)

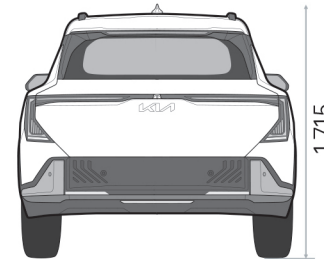
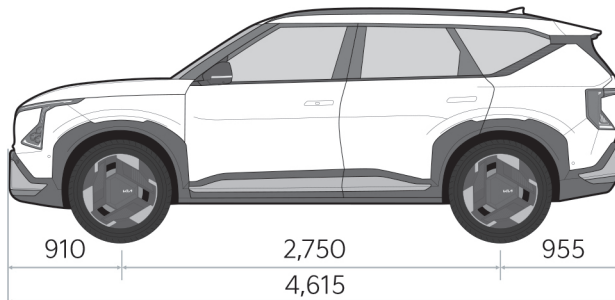
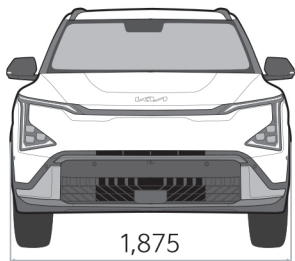
Ivory silver (ISG)

Wheel



20" GT Line Alloy

Dimension



Item	Specification	
	EV	
Type	Crossover SUV	
Maximum power	160/70kW	
Long Range	AWD	
Motor	Dual Motor	
Acceleration (0 to 100 km)	8.5 sec	
Battery	Type	Lithium-ion Battery
	Rated Volt	400 V
	Energy	88.1 kWh
All Electric Range (WLTP)	500 (WLTP) km	
Max Speed	185 km/h	
Level 2(Normal AC charging) Charging Time 10~100%	8hr 10min	
Level 3 Charging (DC Charging) - (360kW) 10 ~ 80%	27 min	
Maximum torque	310 Nm	

Dimensions

Overall length, width, height (mm)	4,615 / 1,875 / 1,715
Wheelbase (mm)	2,750
Overhang (Front/Rear)	910 / 955
Ground Clearance	166 mm
Leg room (Front/Rear)	1,050 / 1040
Head room (Front/Rear)	990 / 973
Shoulder room (Front/Rear)	1,465 / 1,425

Yangon Showroom : No. 44, Pyay Road, Mayangone Township, Yangon.

Hotline : 09940009000 / 09773777711

Mandalay Showroom : No.(3/59), YGN-MDY Road, Corner of 78 & 101 Theik Pan Street, Mahar Aungmyay Township, Mandalay.

Hotline : 09940009000 / 09773777711

Naypyidaw Showroom : Yaza Thingaha Road, Mingalar Dipa Ward, Pobbathiri Township, Naypyidaw.

Hotline : 09940009000 / 09773777711



Follow us on:

